

# former

## Models: Former 600

**Superior quality of the finished product - Meat fibers are not crushed or destroyed. Forming products in any kind of shape.**



 **NORMIT**  
our ideas work

### **SUITABLE PRODUCTS:**

- hamburger patties
- poultry patties
- sausage patties
- fish patties and more

### **Forming patties in any kind of shape.**

Normit company has developed high capacity forming machines for industrial applications. The machine is suitable for forming minced meat, poultry, fish, potatoe and vegetarian, vegan patties. Forming machine Former 600 allows you to produce products in any kind of shape you require. It is ideal for producers of all types of patties - hamburger patties, poultry patties, sausage patties, fish patties and more.

# former

## Models: Former 600



### Easy and fast changeover to new product.

High speed production of exact-weight patties. Molding former machine is suitable for almost all types of products. The machine allows you to make a variety of forms and work with different materials.

### How it works

Forming is done in the following steps:

1. Filling of the product into the hopper
  2. Feeding of the pressing chamber by feed screws
  3. Pressing the product into the holes of the mould plate
  4. Ejecting of the product
- low maintenance costs guarantee good value and quality. Hopper design and feeding system provide easy cleaning during the transition to another product material.



### Superior quality of the finished product

Meat fibers are not crushed or destroyed on Former 600 - instead they retain their natural alignment so that the finished patty has the superior bite, texture and eating quality. The former produces formed products with excellent shape retention and weight accuracy using only air to release the products.



### Advantages:

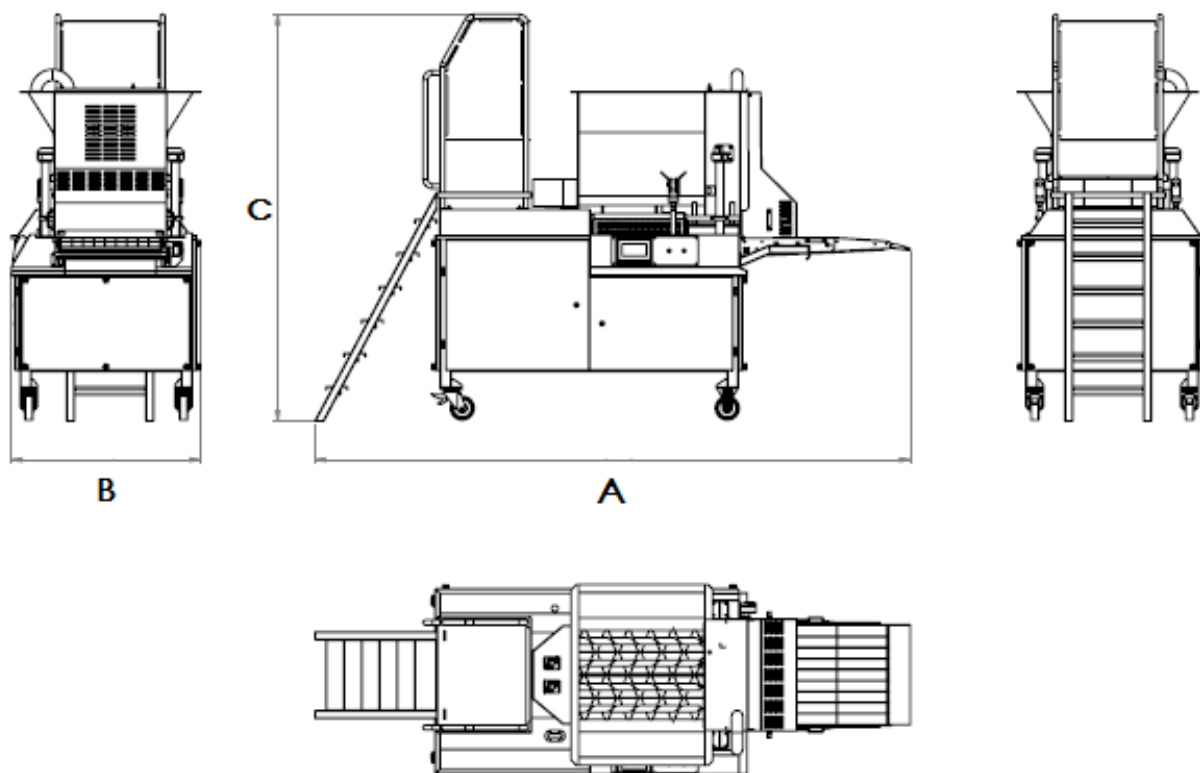
- Meat of almost any shape.
- Simple design.
- Easily produced gourmet patties and burgers.
- Simple changeovers make it easy to produce various size and shape patties.
- Easily replaceable molding plates guarantee a minimum changeover time.
- High quality with excellent preservation structure.
- Includes a programmable PLC that optimizes the molding cycle for each individual product.



# former

## Models: Former 600

### Technical drawings



Model	Former 600
Production max. kg/h	800
Width: B mm	1200
Height: C mm	2580
Lenght: A mm	3773
Power kW	3
Weight kg	1154

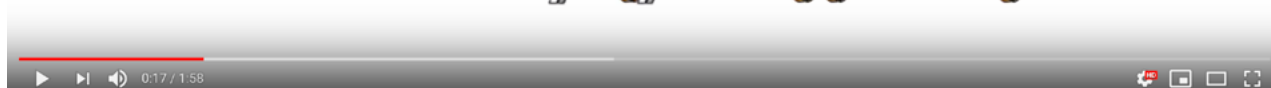
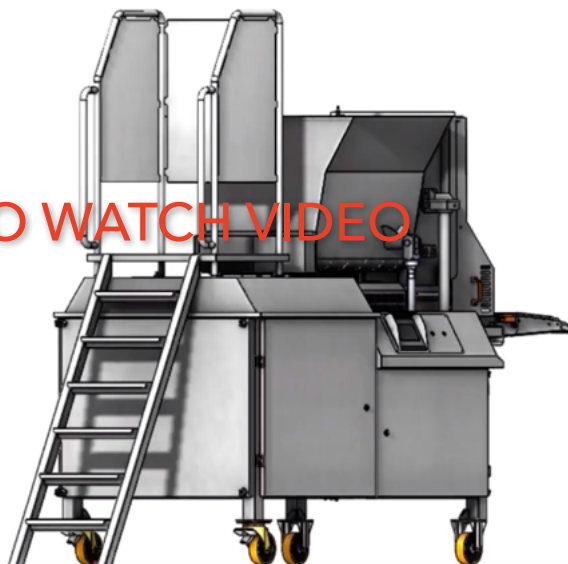
# former

## Models: Former 600

*round hamburger patty*



CLICK TO WATCH VIDEO



 Watch video

NORMIT FOOD, s. r. o.  
Pezinská cesta 5104  
901 01 Malacky, SLOVAKIA

Skype:  
manager.normit

Telephone number:  
+421 902 400 321

E-mail:  
sales@normit.com

Web:  
www.normit.com